



***2025 PRODUCT GUIDE***



Want to learn more?  
**Scan** here to explore  
our website!

# ***TABLE OF CONTENTS***

Who We Are	3-4
Customization	5-8
Models	9-10
DX-1000/DX-1000 ESDS	11-16
Mobile Classroom	17-18
DX-460	19-22
DX Trailer Series	23-26
DX-100 Series	27-30
DX-500	31-33
Testimonials	34
STARS Case Study	35-36
Contact	37-38



***DRAXXON:  
WHO WE ARE***





# ***GO WHERE OTHERS CAN'T***

DRAXXON IS A WORLDWIDE MANUFACTURER OF SPECIALTY VEHICLES PROVIDING SOLUTIONS IN A MULTITUDE OF CATEGORIES, INCLUDING PUBLIC SAFETY, GOVERNMENT, MILITARY, AND PRIVATE INDUSTRY. WE SPECIALIZE IN THE DESIGN AND INTEGRATION OF SOME OF THE MOST ADVANCED TECHNOLOGY AND PROCESSES OF UAS AND COUNTER UAS TECHNOLOGY INTO VEHICLES AND THEIR SYSTEMS. OUR MISSION IS TO COMBINE THE VERY BEST TECHNOLOGY AND EQUIPMENT WITH THE VERY BEST PEOPLE TO DEPLOY IT UNDER SOME OF THE MOST DIFFICULT CIRCUMSTANCES.

# ***FULLY CUSTOMIZABLE SOLUTIONS***

---

EVERY CUSTOMER HAS UNIQUE MISSION NEEDS, SO WE FOCUS ON CREATING CUSTOM SOLUTIONS THAT FIT. FROM CONCEPT TO COMPLETION, OUR TEAM WORKS CLOSELY WITH YOU TO BRING YOUR VISION TO LIFE.



**“THEY TOOK TIME TO LISTEN TO OUR NEEDS. IN THIS SITUATION, WE SPECIFICALLY NEEDED A COMMAND TRUCK, AND OUR NUMBER ONE PRIORITY WAS ACCOUNTABILITY.”**

**-CLAY INGLE, HAMILTON COUNTY SPECIAL TACTICS AND RESCUE SERVICES, INC. (STARS)**



# OUR PROCESS

1

## **IDENTIFY THE MISSION NEEDED**

WE WILL IDENTIFY THE MISSION NEED, RECOGNIZE THE OBSTACLES, AND ASSEMBLE YOUR DEDICATED DRAXXON TEAM TO CREATE A PLANNED SOLUTION.

2

## **CREATE A CLEAR SOLUTION**

THE DRAXXON TEAM WILL COLLABORATE WITH YOU TO CREATE A DESIGN THAT IS COMMITTED TO YOUR NEEDS AND EXPECTATIONS. ANYTHING IS POSSIBLE AND FULLY CUSTOMIZABLE.

3

## **DELIVER EXCELLENCE**

YOUR PROJECT IS NOW A FULLY REALIZED SOLUTION. DELIVERED ON TIME AND READY TO DEPLOY. OUR RELATIONSHIP IS FURTHER SOLIDIFIED AS A DRAXXON PARTNER AND ACCESS TO DRAXXON RESOURCES.

4

## **CONTINUED 24/7 SUPPORT**

RELATIONSHIP, THEN SALES. EXPECT UNMATCHED 24/7 SERVICE AND SUPPORT. THIS STARTS AT PROJECT INCEPTION AND CONTINUES THROUGH THE LIFE SERVICE OF YOUR VEHICLE.



# ***TAKE COMMAND AND MAINTAIN CONTROL OF EVERY MISSION WITH DRAXXON***

## ***1 OF 5 SOF TRUTHS***

***"HUMANS ARE MORE IMPORTANT THAN HARDWARE.***

***PEOPLE – NOT EQUIPMENT – MAKE THE CRITICAL DIFFERENCE. THE RIGHT PEOPLE, HIGHLY TRAINED AND WORKING AS A TEAM, WILL ACCOMPLISH THE MISSION WITH THE EQUIPMENT AVAILABLE. ON THE OTHER HAND, THE BEST EQUIPMENT IN THE WORLD CANNOT COMPENSATE FOR A LACK OF THE RIGHT PEOPLE."***

***EVENT SECURITY*** 

***MILITARY AND DEFENSE*** 

***MOBILE CLASSROOM*** 

***PRIVATE SECURITY*** 

***PUBLIC SAFETY*** 

***UAS OPERATION*** 

***UTILITY ASSET INSPECTION*** 

**SCAN TO VIEW WEBSITE**  
**DELIVERING SUPERIOR**  
**SOLUTIONS FOR EVERY MISSION**





# ***DRAXXON MODELS***





***DX-1000 SERIES***  
***MOBILE CLASSROOM***  
***DX-460 SERIES***  
***DX TRAILER SERIES***  
***DX-100 SERIES***  
***DX-500 SERIES***



# ***DX-1000***

---

THE DX-1000 IS A COMPREHENSIVE SPECIALTY VEHICLE PLATFORM SUITED FOR MULTIPLE ROLES. THE DX-1000 CAN BE CONFIGURED ON A FORD TRANSIT OR MERCEDES SPRINTER PLATFORM WITH OFF-ROAD CAPABILITY FOR USE IN ANY TERRAIN. THE INTERIOR INTEGRATES CUTTING EDGE TECHNOLOGY INTO A TURNKEY SOLUTION FOR ANY OPERATION.



**Scan** here to view  
DX-1000 product page!



# ***DX-1000 ESDS***

THE DX-1000 AND DX-1000 EVENT SECURITY AND DEFENSE SYSTEM (ESDS) PROVIDE ANY AGENCY OR ORGANIZATION WITH THE ABILITY TO COMBINE UAS FLIGHT OPERATIONS INTO OTHER COMMAND AND CONTROL SYSTEMS. NO MATTER THE MISSION, THE DX-1000 SYSTEM WILL BRING AN ENTIRELY NEW LEVEL OF SITUATIONAL AWARENESS FOR EVERYONE INVOLVED.





# ***PNEUMATIC MAST*** **WITH ANTENNA INTEGRATION**



***STORAGE SPACE***  
CUSTOMIZED TO YOUR NEEDS



***DX-1000 INTERIOR***  
**CUSTOM-BUILT INTERIOR FLIGHT  
& WORK STATIONS**



# ***MOBILE CLASSROOM***

---



***MOBILE CLASSROOM***  
***INTERIOR***  
**WITH DRY ERASE COUNTERTOPS**



# ***DX-460***

DESIGNED FOR THOSE WHO DEMAND RELIABILITY IN CHALLENGING ENVIRONMENTS. THIS COMPACT MOBILE COMMAND CENTER COMBINES ENHANCED OFF-ROAD CAPABILITIES WITH THE RENOWNED FUNCTIONALITY THAT DRAXXON IS KNOWN FOR. WHETHER STATIONED FOR LONG-TERM PASSIVE SURVEILLANCE OR DEPLOYED IN HARD-TO-REACH AREAS, THE DX-460 IS ENGINEERED TO MEET YOUR OPERATIONAL NEEDS WITHOUT COMPROMISING PERFORMANCE.



## THE ULTIMATE MOBILE COMMAND CENTER FOR ANY TERRAIN

---

PERFECT FOR BOTH LONG- AND SHORT-TERM ACTIVE SURVEILLANCE, THE DX-460 OFFERS MULTIPLE DEPLOYMENT OPTIONS. IT SEAMLESSLY INTEGRATES WITH THE OPTIONAL ON BOARD CAMERAS AND SUPPORTS BOTH TETHERED AND TRADITIONAL UAS (UNMANNED AERIAL SYSTEM) OPERATIONS. AS THE INDUSTRY SHIFTS TOWARDS SMALLER, MORE EFFICIENT SOLUTIONS, THE DX-460 STANDS OUT AS A POWERFUL YET COMPACT ALTERNATIVE TO LARGER COMMAND CENTERS.







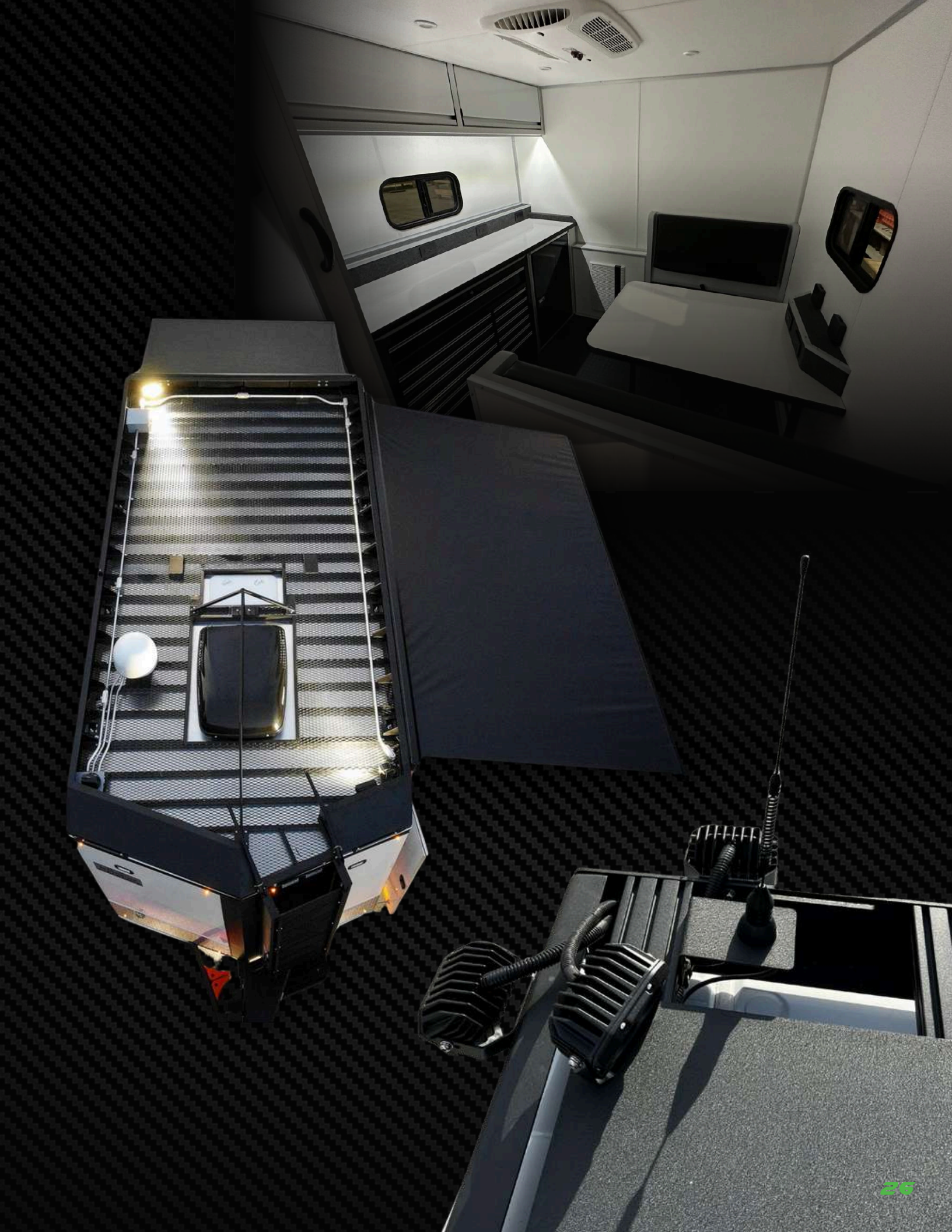
# ***DX TRAILER SERIES***

DX TRAILERS ARE COMPREHENSIVE COMMAND CENTER PLATFORMS SUITED FOR MULTIPLE ROLES. DX TRAILERS CAN BE CONFIGURED IN ANY SIZE AND CONFIGURATION AND WILL BRING AN ENTIRELY NEW LEVEL OF SITUATIONAL AWARENESS AND CAPABILITY. AS WITH ANY DX PRODUCT, EACH ITERATION IS FULLY CUSTOMIZABLE.

• ***DX-714 SERIES*** • ***DX-816 SERIES***









# ***DX-100 SERIES***

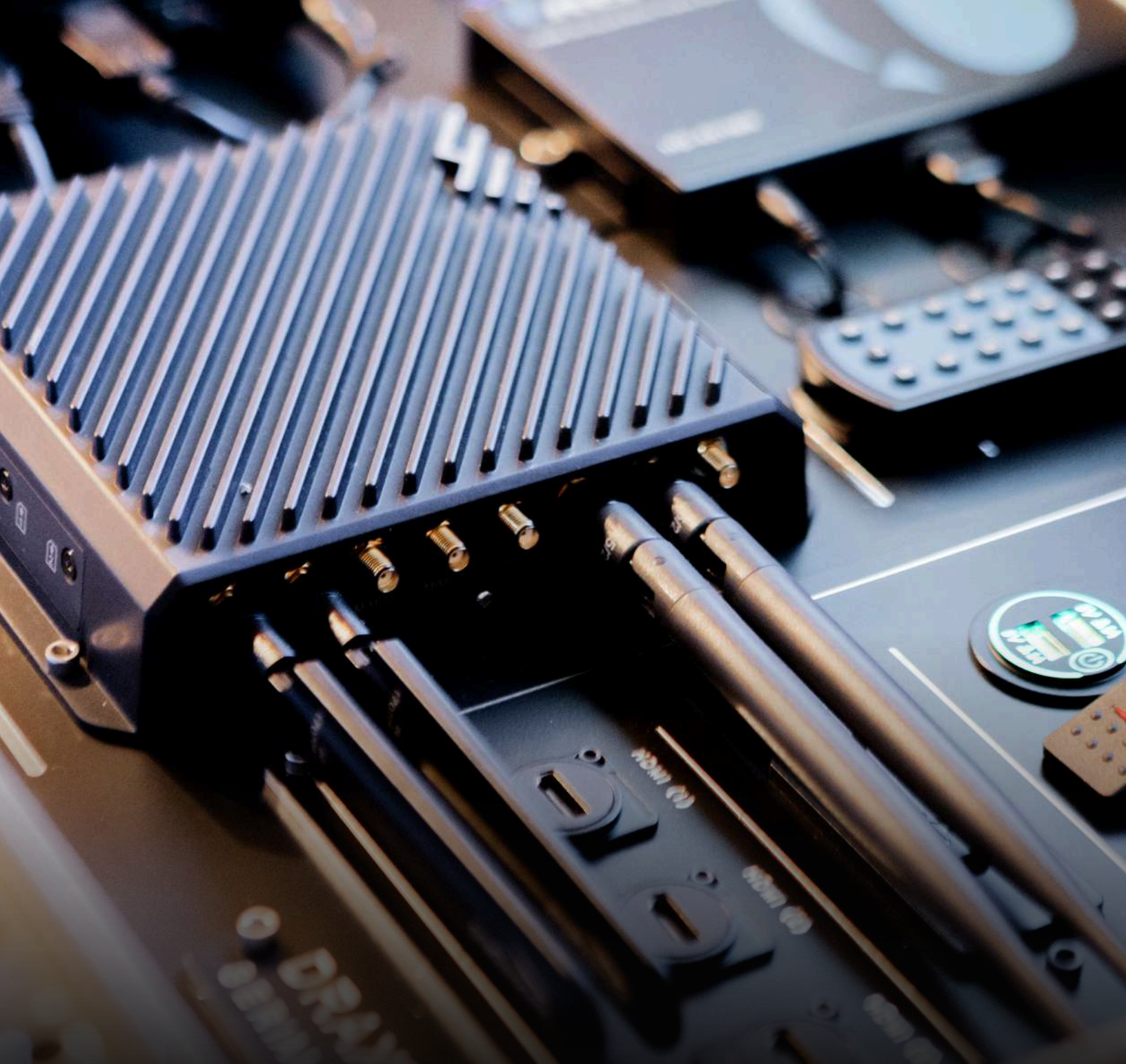
## ***PORTABLE GROUND CONTROL STATIONS***



THE DX-100 PORTABLE GCS SERIES COMES IN VARIOUS CONFIGURATIONS AND CAN BE FULLY CUSTOMIZED. HOUSED IN A RUGGED PELICAN CASE, IT'S BUILT FOR RELIABLE USE IN TOUGH CONDITIONS.



***ONE BUTTON  
STARTUP OPERATION***  
WITH 24" DAYLIGHT VIEWABLE DISPLAY



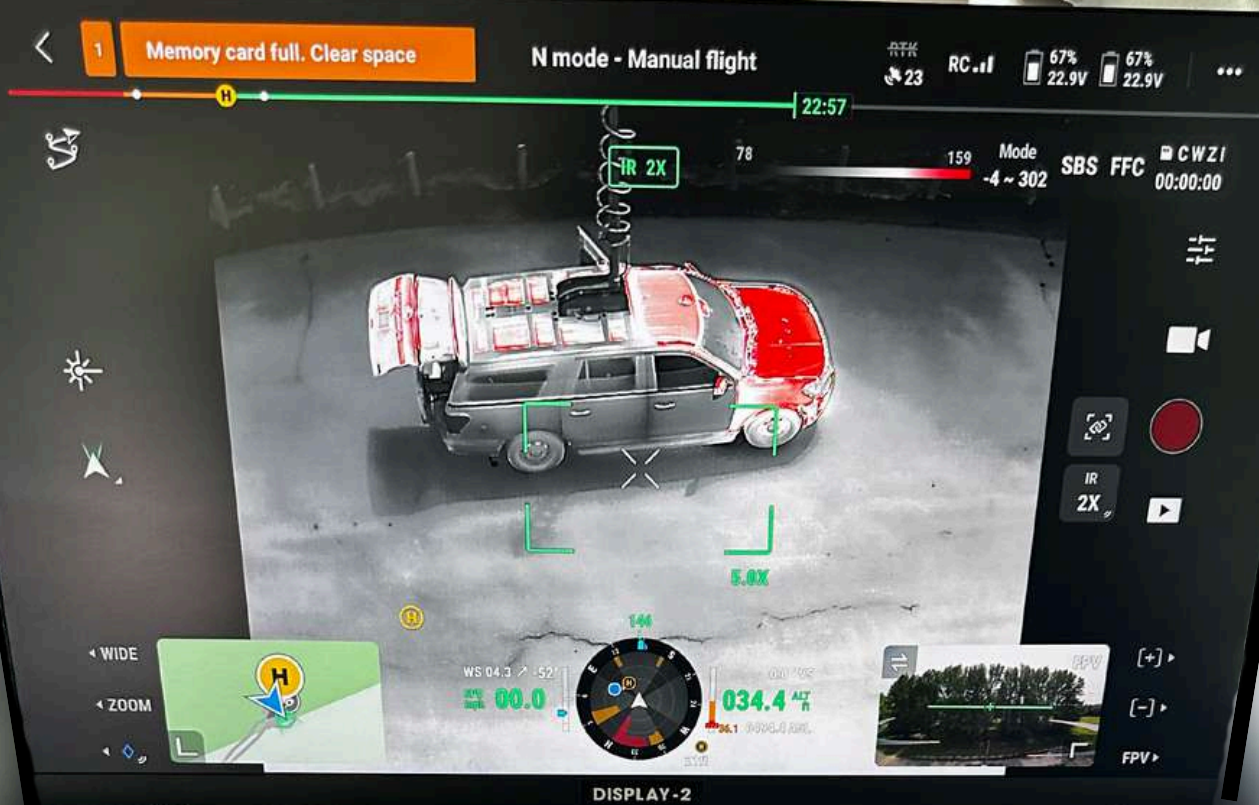
**"THE BIGGEST BENEFIT TO HAVING THE DX-100 WOULD BE OFFERING THE OPERATOR(S) A MUCH BETTER VIEW OF WHAT THE (DRONE) CAMERA IS SEEING, USING THE SMALL WASHED-OUT SCREEN ON THE REMOTE(S). THE BENEFIT OF SHARING WITH OTHERS ON OR OFF SITE IS A REAL ASSET AS WELL, AS IT ALLOWS OTHERS TO VIEW THE DRONE EITHER REMOTELY THROUGH WEBEX, OR OTHER STREAMING SERVICES, AND NOT HAVING PEOPLE LOOKING OVER YOUR SHOULDER TO SEE WHAT YOU'RE SEEING."**

**-PS 66 DRONE PILOT**



# ***DX-500***

---



THE DX-500 SUV FEATURES A BACKSEAT COMMAND POST/FLIGHT STATION WITH A WIDESCREEN MONITOR AND CONTROL PANEL, UAS ANTENNA QUICK-CONNECTS FOR BOOSTED SIGNAL TO THE ROOF-MOUNTED ANTENNA RADOME, AND AN INTEGRATED PC FOR COMPLETE COMMAND AND CONTROL. THIS DESIGN CONFIGURATION CAN BE USED WITH INTEGRATED SUAS TECHNOLOGY, OTHER UNMANNED ROBOTIC EQUIPMENT, OR ROOF-MOUNTED MASTS/PTZ CAMERAS. CUSTOM DESIGNS AND CONFIGURATIONS AVAILABLE!





**“USING THE DX-1000, THE PILOT/CAMERA OPERATOR CAN BE ISOLATED BETTER FROM THE NOISE AND DISTRACTIONS THAT MAY BE OCCURRING IN THE AREA TO STAY MORE FOCUSED ON THE TASK AT HAND. THIS IMPROVES COMMUNICATION BETWEEN THE PILOT, CAMERA OPERATOR, AND ANYONE NEEDING TO COMMUNICATE WITH THEM...I BELIEVE IT CAN TRULY IMPROVE SAFETY.”**

**-P66 DRONE PILOT**

**“I’VE BEEN IN EMERGENCY SERVICES FOR OVER 40 YEARS, SO I HAD A VERY SPECIFIC IDEA OF WHAT I WANTED. I COULDN’T HAVE BEEN MORE IMPRESSED WITH THE DRAXXON TEAM, AS THEY WERE ABLE TO PROVIDE EXACTLY WHAT I NEEDED. IT WAS A GREAT EXPERIENCE ALL THE WAY THROUGH AND THEY MADE SURE TO TAKE THE TIME TO UNDERSTAND OUR GOALS.”**

**-CLAY INGLE, STARS**

**“DX-PRODUCTS ALLOW US TO RAPIDLY SHARE INFORMATION ABOUT CRITICAL INFRASTRUCTURE WITH INTERESTED PARTIES. THE (DRONE) PILOT CAN COMMUNICATE AND PINPOINT REQUESTED AREAS ON-SCREEN WHILE THE VO (VISUAL OBSERVER) MONITORS POSITIONING OF THE AIRCRAFT. ALL PARTIES CAN SEE NOT ONLY THE ITEM WE ARE VIEWING BUT ALSO THE INSTRUMENT DECK ENHANCING THE SAFETY OF OUR OPERATIONS.”**

**-P66 DRONE PILOT**



# ***CASE STUDY: THE EXACT SOLUTION FOR RESCUE-MISSION ACCOUNTABILITY***

## ***HIGH EXPECTATIONS TO SUPPORT HIGHLY IMPORTANT MISSIONS***

The Hamilton County Special Tactics and Rescue Services, Inc. (STARS) are designed to provide special tactical and technical support to area fire, rescue and police services throughout Chattanooga, Hamilton County Tennessee and the surrounding area. The STARS Team is a support group of the Hamilton County Emergency Services.

As their website states, they have responded to over 500 missions, supporting:

- Local Fire, rescue and EMS
- Local law enforcement
- FBI, TBI, GBI, and other Tri-State Law Enforcement Agencies
- Additional Assistance for Special Events

Clay Ingle is Chief of the Hamilton County STARS, and has seen a lot in his decades of experience. When it came time to find a new vehicle, he had high expectations.

## ***AN EXCITING OPPORTUNITY***

The opportunity came for Ingle to assess options for a new vehicle when a government grant came through, allowing for an upgrade.

The STARS had previously used a 2001 van as its command center, and Clay was thrilled for a chance to get the type of support vehicle to meet their requirements.

## ***ENTER DRAXXON***

Clay first heard of Draxxon through another government agency who had good things to say. He reached out, and immediately was impressed with Draxxon's responsiveness and ability to listen to the needs of STARS.

"We met with Draxxon and it was very easy working with them because they understood what we needed," Clay said. "They took time to listen to our needs. In this situation we specifically needed a command truck, and our number one priority was accountability."



## ***SPECIFIC NEEDS AND DESIRES***

Clay didn't approach Draxxon with vague ideas. He had a vision in mind from the start, and needed to work with a team that could bring this vision to life.

"I've been in emergency services for over 40 years, so I had a very specific idea of what I wanted," Clay said. "I couldn't have been more impressed with the Draxxon team, as they were able to provide exactly what I needed. It was a great experience all the way through, and they made sure to take the time to understand our goals."

## ***PRIORITY #1: ACCOUNTABILITY***

Clay explained that accountability was his number one priority, which in the rescue field means being able to account for each individual that's out on the mission.

His vision for the MCV was to have a section dedicated solely to accountability, which was achieved through the Draxxon DX-1000. Clay explained that the end result was the entire back of the DX1000 being used for accountability.

"This allows us to constantly keep up with all of the people who are out and track each person," he said. "An infinite commander will be inside the MCV and be informed on where every single person is. Having the accountability station was essential for us, and it works exactly as we'd hoped," Clay said.

## ***"THE DX-1000 DOES EVERYTHING I WANTED IT TO"***

While the back of the DX-1000 is used for accountability, it also has the exterior drivers side front for a briefing area. The exterior briefing area features a daylight viewable display to provide relevant data and imagery to others on scene. The vehicle interior provides operators with comfortable, secure command and control positions. An entirely new level of SITUATIONAL AWARENESS is achieved using a wide variety of available sensors and technology.

"The DX-1000 does everything we wanted it to," Clay said. "I can't brag enough about the work they did and how helpful they've been in getting this van exactly how we wanted it. The Draxxon team are great people, and I'd highly recommend them for anyone who has an opportunity to get a rescue vehicle."

***TAKE COMMAND - MAINTAIN  
CONTROL*** 

---



***SCAN TO VISIT  
OUR WEBSITE***

---

***WITH DRAXXON***

**314-391-8212**



***www.draxxon.org***



***contact@draxxon.org***



***1103 West Randolph Street  
McLeansboro, Illinois 62859***



